

## Why STATLOCK® Foley Stabilization Devices?



Foley catheters are often subject to inadvertent pulling or tugging that can expose the user to a great deal of discomfort. The STATLOCK® Foley stabilization device

is designed to minimize catheter movement and accidental removal, thereby maximizing patient comfort.

## Daily Maintenance

1. The StatLock® Stabilization Device should be assessed daily and changed at least every seven days.
2. If pad becomes soiled, then wash with soap/water, saline or hydrogen peroxide. Do not use alcohol or prepackaged bathing systems, which could lead to early lifting.
3. If showering/bathing, then cover with plastic wrap or waterproof dressing.
4. Evaluate skin integrity prior to application.
5. Consult your healthcare professional about the removal of the StatLock® Stabilization Device if you experience any shifts in fluid input that may interfere with skin integrity.

**BARD | MEDICAL**

C. R. Bard, Inc.  
8195 Industrial Boulevard  
Covington, Georgia 30014

**800.526.4455 Fax: 800.852.1339**  
**E-mail: [bardmedical.customerservice@crbard.com](mailto:bardmedical.customerservice@crbard.com)**  
**[www.statlock.com](http://www.statlock.com)**

**StatLock®**  
Stabilization Devices



*\* For long-term male Foley catheter users, ideal location for stabilization is the abdomen to prevent meatal damage and erosion. StatLock® devices should be monitored daily and replaced when clinically indicated, at least every 7 days. Catheter insertion site should be treated per established hospital policy and procedure. StatLock® devices are contraindicated on patients with known tape or adhesive allergies. Please consult product inserts and labels for any indications, contraindications, hazards, warnings, cautions and directions for use. StatLock® devices are sterile and latex-free.*

Bard and StatLock are registered trademarks of C. R. Bard, Inc. or an affiliate.

© Copyright 2008 C. R. Bard, Inc. All rights reserved. P/N M1171 Rev. 07/08

# STATLOCK®

FOLEY STABILIZATION DEVICE

## Patient User Guide



## Designed to:

- Stabilize the catheter to prevent excessive movement and minimize accidental removal
- Allow catheter movement without unnecessary pulling on the catheter
- Maximize patient comfort
- Be easier to use than tape and leg straps
- Allow for easy cleaning

**BARD | MEDICAL**

# Application Technique

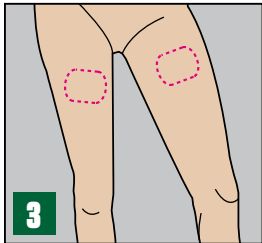


## Prep

1. Place Foley catheter into retainer. Directional arrow should point towards catheter tip, and the balloon inflation arm should be next to the clamp hinge.



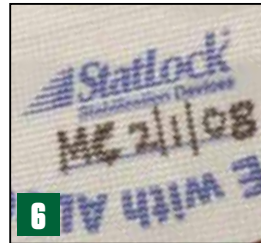
2. Close lid by placing your fingers under the pad and pressing the grip markers at the end of the clamp with your thumb, being careful to avoid pinching the catheter.



3. Identify proper securement site by gently laying the StatLock® Stabilization Device straight on the front of the thigh, then back up one inch towards the insertion site.\* Make sure leg is fully extended.
  - Gently place the StatLock® Stabilization Device off to the side, away from the selected securement site.



4. Cleanse and degrease securement site with alcohol. Let skin dry. Be sure to clean area larger than securement site.
5. Apply skin protectant using both pads, in direction of hair growth, to area larger than securement site. Allow to dry completely (10-15 seconds).



6. Using permanent marker, write initials and date of application on StatLock® anchor pad.

**NOTE: Always secure catheter into the StatLock® Stabilization Device retainer BEFORE applying adhesive pad on skin.**



## Place and Peel

7. Align the StatLock® Stabilization Device over securement site, leaving one inch of catheter slack between insertion site and the StatLock® Stabilization Device retainer.\* Make sure leg is fully extended.



8. While holding the retainer to keep the pad in place, peel away paper backing, one side at a time, and place tension-free on skin.

# Removal Technique



## Disengage

1. Open retainer by pressing release button with thumb, then gently lift to open.
2. Remove Foley catheter.



## Dissolve

3. Wipe the edge of the pad using at least 5-6 alcohol pads until a corner lifts.



Then continue to stroke undersurface of pad, in a back-and-forth motion, by squeezing the alcohol out to dissolve the adhesive pad away from the skin.

**Do not pull or force pad to remove.**